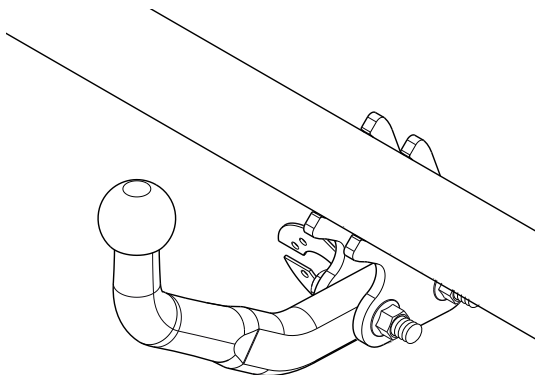
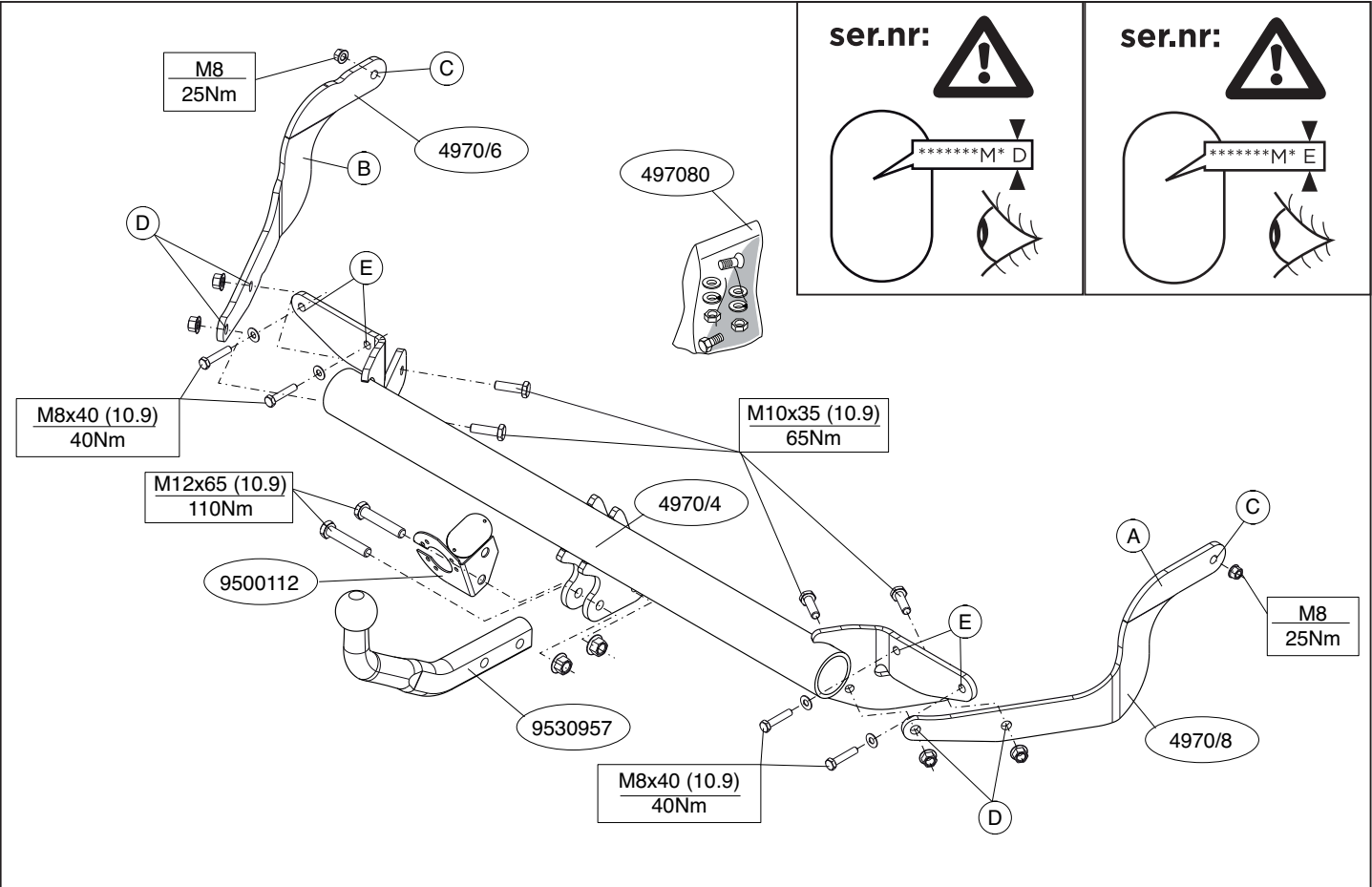

Fitting instructions

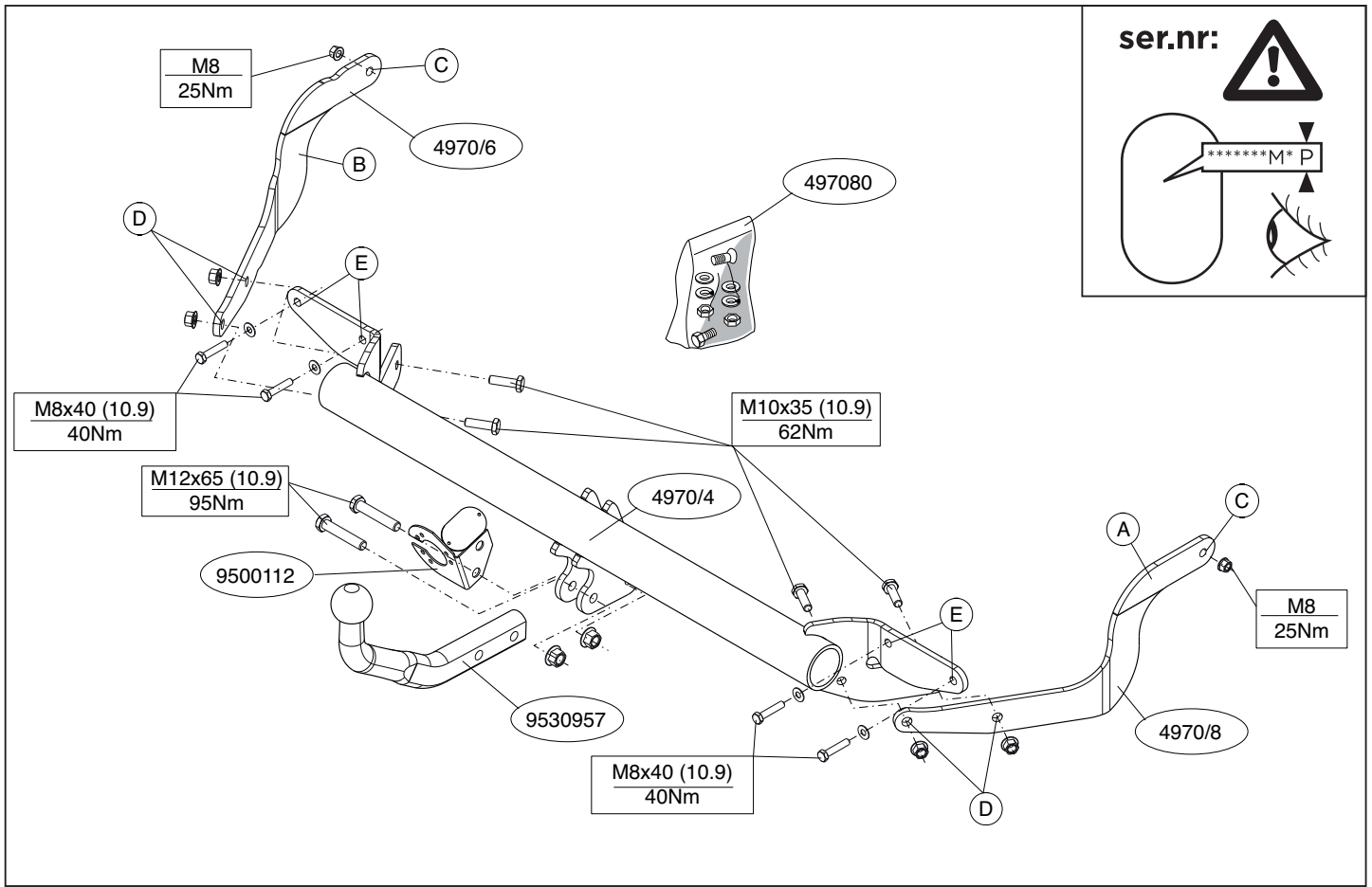
Make: Peugeot

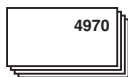
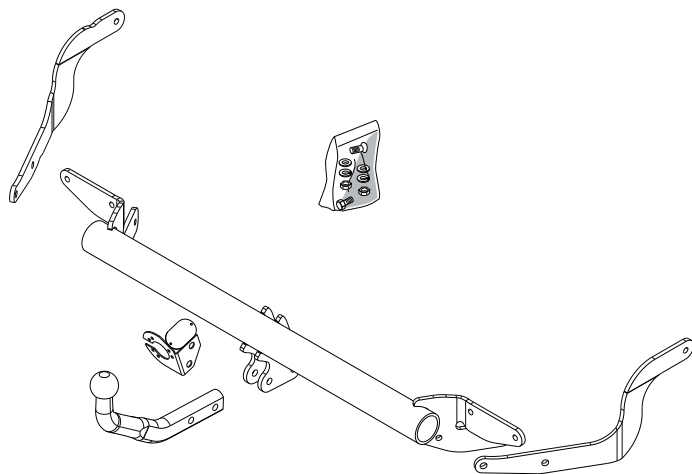
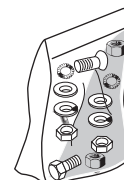
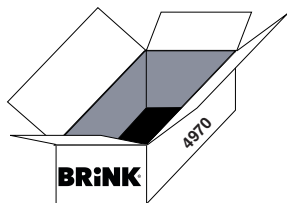
308 SW; 2008->

Type: 4970









(4x) M8x40 (10.9)



(4x) M10x35 (10.9)



(2x) M12x65 (10.9)



(4x) M8



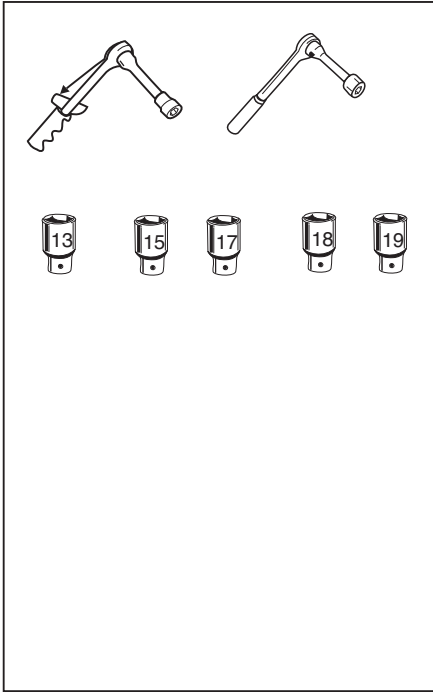
(2x) M8



(4x) M10



(2x) M12



Couplingsclass: A50-X

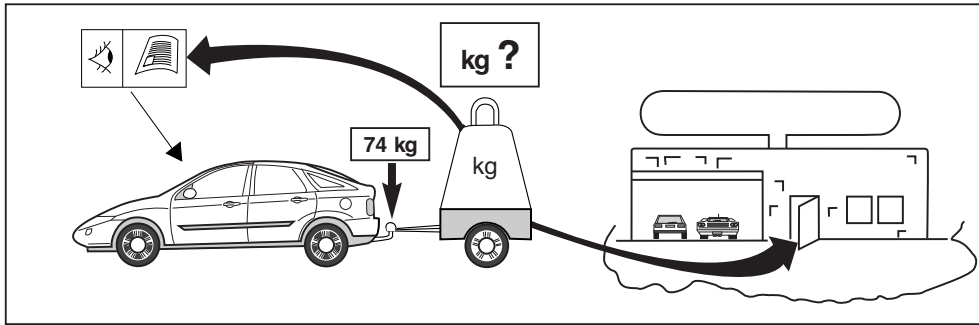
euro tested

Approved

e11 00-7076

94/20/EC

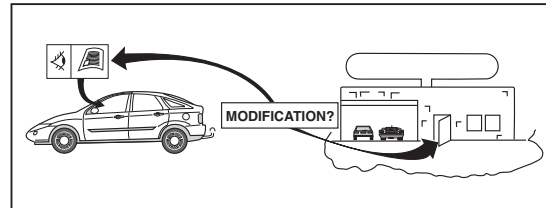
D-Value : 9,6^{1-N}



8.8

10.9

10





NOTE:

* Should this installation process entail the cutting of the bumper – confirmation **MUST** be obtained by the installation engineer of the customer's acceptance prior to completion. Brink Towing Systems do not accept responsibility for any matters arising as a result of this miscommunication.

All measurements are in mm!

HINWEISE:

* Die für das Fahrzeug zugelassene Anhängelast ist den Fahrzeug Unterlagen zu entnehmen. Bei Änderungen des Fahrzeuggewichtes muß die höchstzulässige Anhängelast gegebenenfalls aus dem D-Wert nachgerechnet werden.

Auskunft hierüber kann Ihr Fachhändler oder der TÜV geben.

* Elektrische Anlage gemäß StVZO anbringen.

